



Scan for full manual

## SWT3-22-HU-WP-T-EU/UK Quick Start Guide

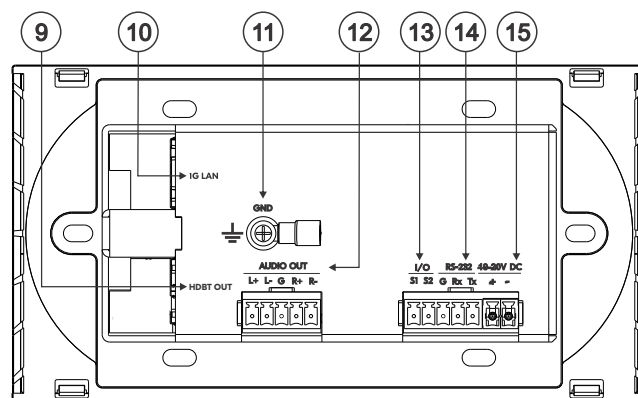
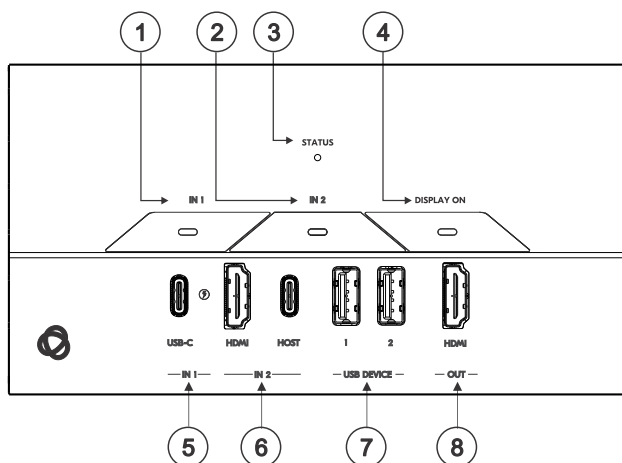
This guide helps you install and use your **SWT3-22-HU-WP-T-EU/UK** for the first time.


Go to <http://www.kramerav.com/downloads/SWT3-22-HU-WP-T-EU/UK> to download the latest user manual and check if firmware upgrades are available.

### Step 1: Check what's in the box

- ✓ **SWT3-22-HU-WP-T-EU/UK 2x2 4K60 USB-C/HDMI Wall-plate Switcher Transmitter**
- ✓ 1 Multi signal USB-C cable (1m)
- ✓ Front panel
- ✓ 1 Power adapter and cord
- ✓ 1 Quick start guide
- ✓ 1 Screw set

### Step 2: Get to know your SWT3-22-HU-WP-T-EU/UK



#	Feature	Function
1	IN 1 Button (USB-C)	Press to select USB-C input port. Button LED white when active signal is detected.
2	IN 2 Button (HDMI, USB-C Host)	Press to select HDMI port. Press to toggle between the HDMI and Host ports. Button LED lights white when active signal is detected.
3	STATUS LED	Lights green when there is an HDBT link and active input signal.
4	DISPLAY ON Button	Press to toggle the remote display on or off. The button LED lights white when remote display power is on.
5	IN 1 USB-C Connector	Connect to USB-C Host (AV sources + USB + LAN): <ul style="list-style-type: none"> <li>that supports DisplayPort Alternate Mode, (for example, a laptop) to share content.</li> <li>to connect to the LAN, using your USB-C wired connection.</li> <li>to charge the connected sources (that supports USB Power Delivery 2.0).</li> </ul> <p> While charging, the charging icon (to the right of the connector) becomes visible and lights orange.</p>
6	IN 2	
	HDMI Connector	Connect to a compatible HDMI display.
7	USB DEVICE	
	USB A 3.1 Connector 1 & 2	Connect to the USB local peripheral devices (for example, a USB camera, a soundbar, microphone, keyboard & mouse).

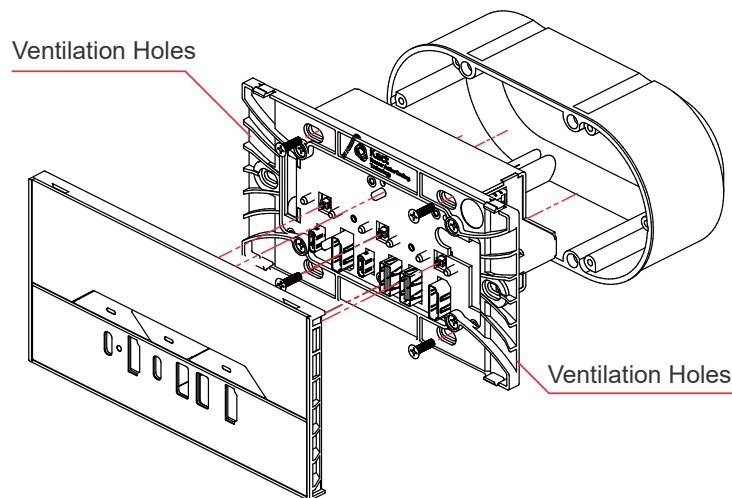
#	Feature	Function
8	OUT HDMI	Connect to a compatible HDMI display.
9	HDBT OUT RJ-45 Connector	Connect to the HDBT IN RJ-45 connector on a receiver (for example, EXT3-POE-XR-R).
10	1G LAN RJ-45 Connector	Connect to a LAN to provide Network and Internet to the source device that is connected to the USB-C IN port, and/or Ethernet extension to the receiver.
11	GND Grounding Screw Ring Tongue Terminal	Connected to grounding wire.
12	AUDIO OUT 5-pin Terminal Block Connector	Connect to a balanced stereo analog audio acceptor.
13	I/O 2-pin Terminal Block	Connect to: • Input-triggering devices (for example, remote buttons or sensors), <b>OR</b> • Output-triggered devices (for example, remote alarm LED indication). These GPIO ports may be configured as a digital input, digital output, or analog input ports.
14	RS-232 3-pin Terminal Block Connector	Connect to an RS-232 controlled device (for example, the connected PTZ USB camera) to be controlled via an IP-connected controller (for example, <b>SL-240C</b> ).
15	19/20V DC	Use the included 19V 6A power supply for powering the unit and charging the source device connected to the USB-C port.

### Step 3: Install the SWT3-22-HU-WP-T-EU/UK

Insert the device into the in-wall box (note that first you need to connect the HDBT cable and power) and connect the parts as shown in the illustration below:



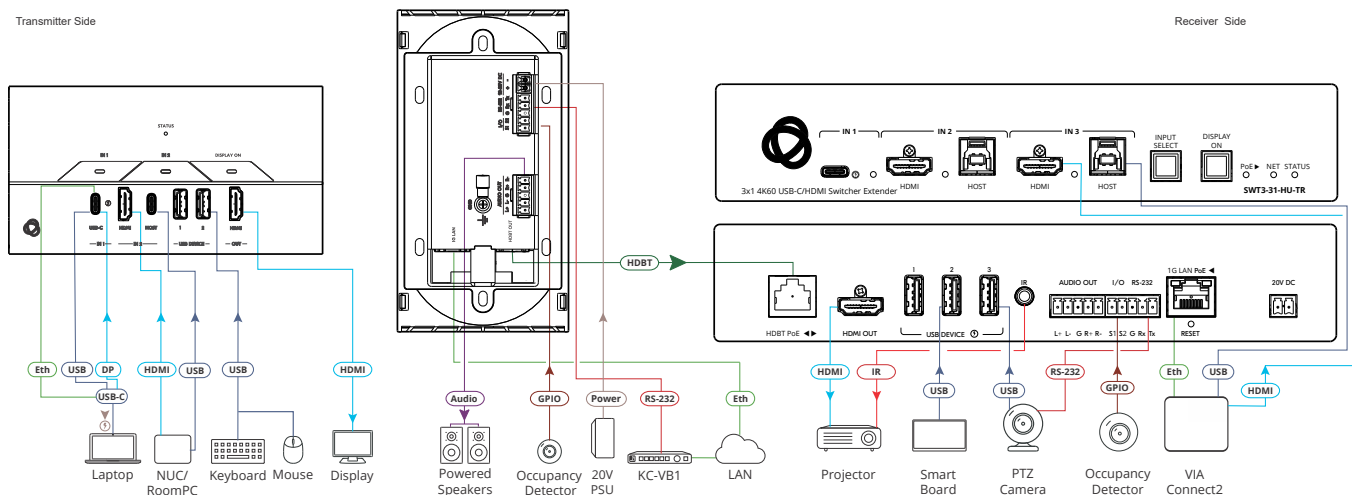
When installing the device, take care not to obstruct the upper and lower ventilation holes.



- EU: 2 gang in-wall junction box, with a cut-hole diameter of 2x68mm and depth that can fit in both the device and the connected cables (DIN 49073).
- UK: 2 gang in-wall junction box (BS 4662), 135x75mm (W, H) and depth that can fit in both the device and the connected cables.

## Step 4: Connect inputs and outputs

Always switch OFF the power on each device before connecting it to your SWT3-22-HU-WP-T-EU/UK.



## Step 5: Connect power

Connect the power adapter to the SWT3-22-HU-WP-T and the power cord and plug it into the mains electricity.

Safety Instructions (See [www.kramerav.com](http://www.kramerav.com) for updated safety information)

### Caution:

- There are no operator serviceable parts inside the unit.
- For products with relay terminals and GPIO ports, please refer to the permitted rating for an external connection, located next to the terminal or in the User Manual.

### Warning:

- Use only the power cord that is supplied with the unit.
- Disconnect the power and unplug the unit from the wall before installing.

The terms HDMI, HDMI High-Definition Multimedia Interface, and the HDMI Logo are trademarks or registered trademarks of HDMI Licensing Administrator, Inc.